


Route surveys	Route EE Paldiski – EE Tootsi	Author Fulmenn UAB	
Project no. / Ref.: RM_Tootsi_02B	Dated December 06, 2023	Classification Initial release	Page number 1 of 47

PUBLIC ROAD MODIFICATION REQUIREMENTS

PROJECT Tootsi, Estonia

DEADLINE for modifications: February 19, 2024

**TIMEFRAME for transportation of WIND TURBINES:
March 4, 2024 until June 20, 2024**














Route surveys	Route EE Paldiski – EE Tootsi	Author Fulmenn UAB	
Project no. / Ref.: RM_Tootsi_02B	Dated December 06, 2023	Classification Initial release	Page number 2 of 47


TABLE OF CONTENTS

1. <u>MARKINGS</u>	3
2. <u>DRAWINGS</u>	4
3. <u>SITE LOCATION AND ROUTING</u>	5
4. <u>TRANSPORT SURVEYS</u>	6
5. <u>NOTES</u>	47

Route surveys	Route EE Paldiski – EE Tootsi	Author Fulmenn UAB	
Project no. / Ref.: RM_Tootsi_02B	Dated December 06, 2023	Classification Initial release	Page number 3 of 47

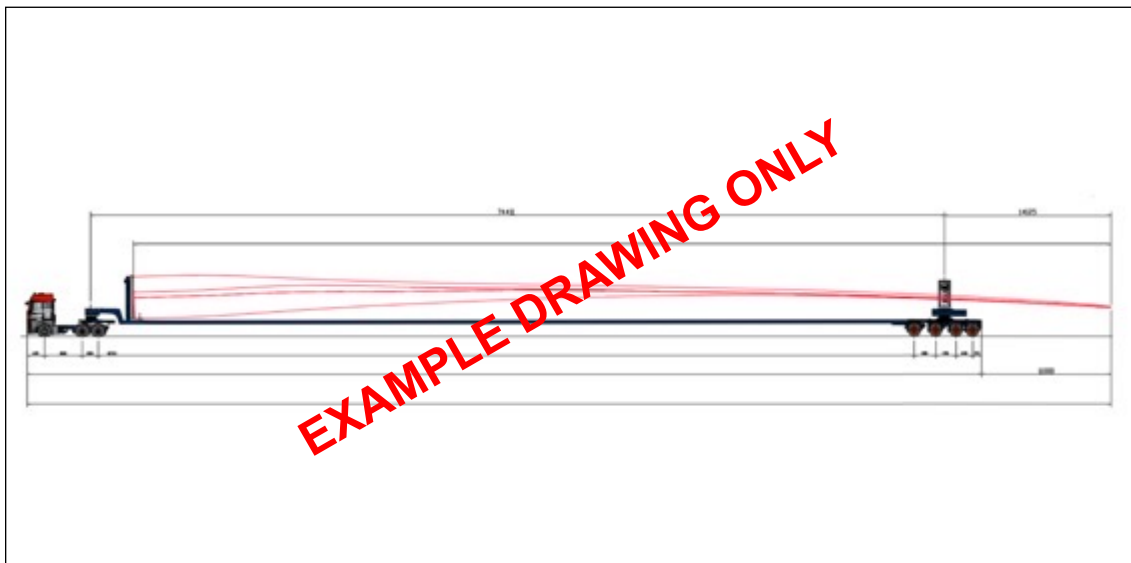
1 MARKINGS

Explanatory icon overview “ILLUSTRATIVE DEFINITION”			
	Direction forward		Trees must be cut down / Branches to be pruned
	Direction backward		Must be made drivable and in level with the road
	Road furniture must be removed		Object / obstacle height
	Road furniture is removable		Area belongs to Private Landowner
Explanatory icon overview “SCALE OF DIFFICULTY”			
	Green colour	Modifications are not needed. No Action	
	Orange colour	It is necessary to check if road signs are removable.	
	Red colour	Modifications are needed	


Route surveys	Route EE Paldiski – EE Tootsi	Author Fulmenn UAB	
Project no. / Ref.: RM_Tootsi_02B	Dated December 06, 2023	Classification Initial release	Page number 4 of 47

2 DRAWINGS

BLADE (Super Wing Carrier semi-trailer)



Total Dimensions Loaded (LxWxH): 89.00 x 4.68 x 5.00m

Route surveys	Route EE Paldiski – EE Tootsi	Author Fulmenn UAB	
Project no. / Ref.: RM_Tootsi_02B	Dated December 06, 2023	Classification Initial release	Page number 5 of 47

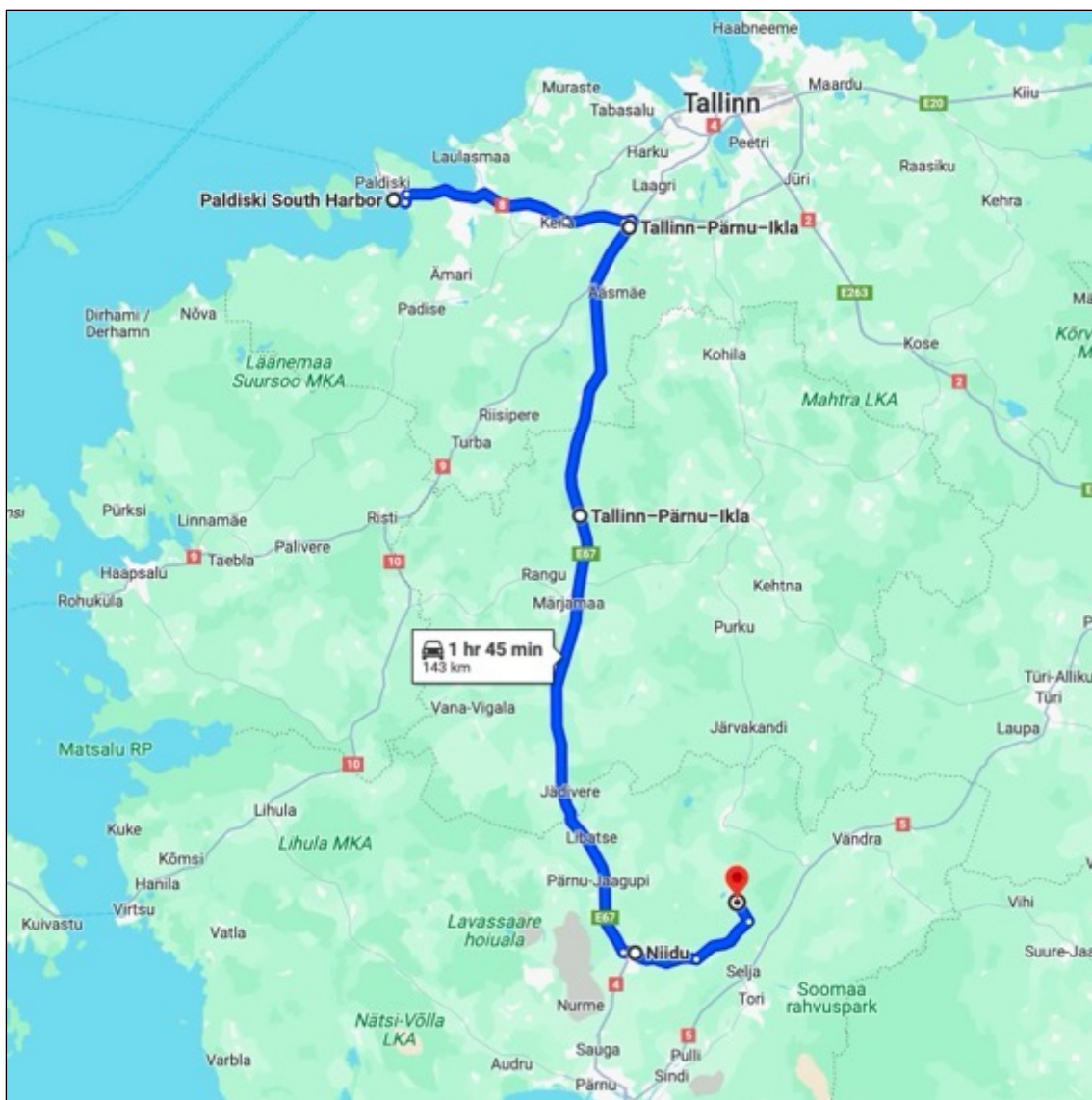
3 SITE LOCATION AND ROUTING


Description

Brief route description: Paldiski (Koka-Kõrtsu tee – Lõunasadama tee – Soomepoiste tee) – 8 – 11 – 4 – - Niidu tee – 203 – 270 – 271 – Tootsi – RTP 58°35'22.79"N 24°47'1.17"E

Google maps link: <https://maps.app.goo.gl/sNLTPfTJavWm47Md9>

Length of the route **143km**



Route surveys	Route EE Paldiski – EE Tootsi	Author Fulmenn UAB	
Project no. / Ref.: RM_Tootsi_02B	Dated December 06, 2023	Classification Initial release	Page number 6 of 47

4 TRANSPORT SURVEY

Location 1-1, (Koka-Kõrtsu tee, Paldiski) Exit from port of Paldiski. Steel frame



Actions:

- Ref. to Location 1-1; 1-2
- Height of the frame 5,55m
- No Action

Google maps coordinates: 59.335247, 24.083227 <https://maps.app.goo.gl/PyWu7ko7N8BJN18v7>


Location 1-1, (Koka-Kõrtsu tee, Paldiski) Exit from port of Paldiski. Information Gate



Actions:

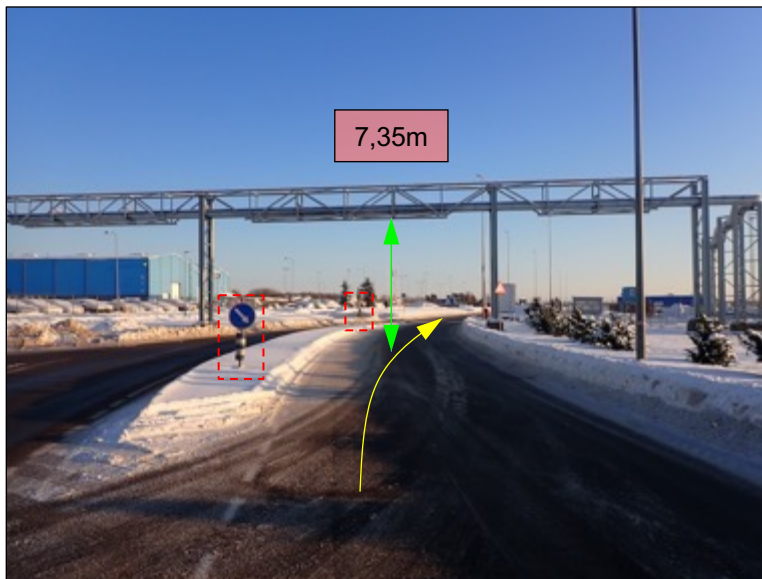
- Ref. to Location 1-1; 1-2

Google maps coordinates: 59.335247, 24.083227 <https://maps.app.goo.gl/PyWu7ko7N8BJN18v7>

Route surveys	Route EE Paldiski – EE Tootsi	Author Fulmenn UAB	
Project no. / Ref.: RM_Tootsi_02B	Dated December 06, 2023	Classification Initial release	Page number 7 of 47

4 TRANSPORT SURVEY

Location 2-1, (Koka-Kõrtsu tee, Paldiski) Traffic island. Pipeline gates



Actions:

- Height of the frame 7,35m
- 2 road signs are removable

Google maps coordinates: 59.334679, 24.090580 <https://maps.app.goo.gl/PuYJKbZrvPLFzaiy8>


Location 3-1, (Lõunasadama tee, Paldiski) Turn left to road 174



Actions:

- Ref. to Locations 3-1; 3-2; 3-3
- 2 road signs are removable

Google maps coordinates: 59.331211, 24.101895 <https://maps.app.goo.gl/UTTJa316r9GpqQEH9>

Route surveys	Route EE Paldiski – EE Tootsi	Author Fulmenn UAB	
Project no. / Ref.: RM_Tootsi_02B	Dated December 06, 2023	Classification Initial release	Page number 8 of 47

4 TRANSPORT SURVEY

Location 3-2, (Lõunasadama tee, Paldiski) Turn left to road 174



Actions:

- Ref. to Locations 3-1; 3-2; 3-3

Google maps coordinates: 59.331211, 24.101895 <https://maps.app.goo.gl/UTTJa316r9GpqQEH9>

Location 3-3, (Lõunasadama tee, Paldiski) Turn left to road 174



Actions:

- Ref. to Locations 3-1; 3-2; 3-3

Google maps coordinates: 59.331211, 24.101895 <https://maps.app.goo.gl/UTTJa316r9GpqQEH9>

Route surveys	Route EE Paldiski – EE Tootsi	Author Fulmenn UAB	
Project no. / Ref.: RM_Tootsi_02B	Dated December 06, 2023	Classification Initial release	Page number 9 of 47

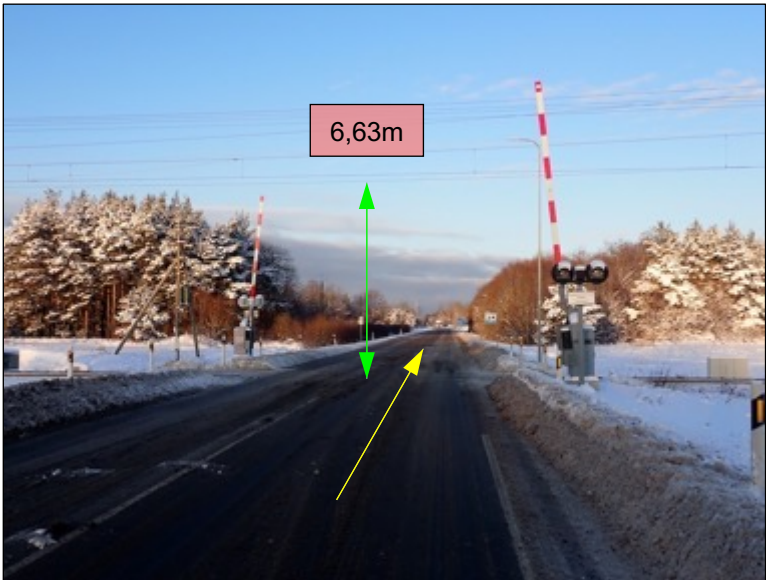
4 TRANSPORT SURVEY

Ref. to Locations 3-1; 3-2; 3-3. Swept parth No. 1



Google maps coordinates: 59.331211, 24.101895 <https://maps.app.goo.gl/UTTJa316r9GpqQEH9>

Location 4-1, (Road 174) Electrified railroad crossing



Actions:

- Height of the electric line 6.63m
- No Action

Google maps coordinates: 59.336590, 24.103090 <https://maps.app.goo.gl/WzQYWtmrhTNYo7ig9>

Route surveys	Route EE Paldiski – EE Tootsi	Author Fulmenn UAB	
Project no. / Ref.: RM_Tootsi_02B	Dated December 06, 2023	Classification Initial release	Page number 10 of 47

4 TRANSPORT SURVEY

Location 5-1, (Road 174) Turn right to road 8

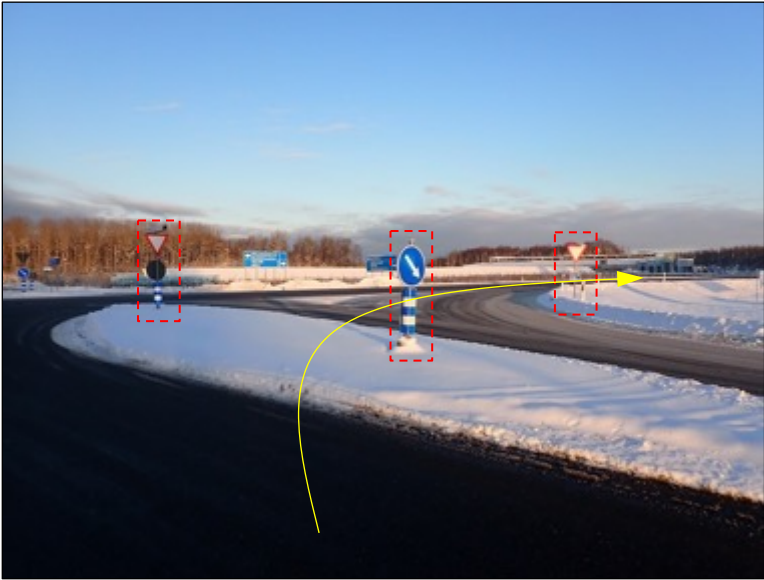


Actions:

- Ref. to Location 5-1; 5-2; 5-3
- 3 road signs are removable

Google maps coordinates: 59.340181, 24.104351 <https://maps.app.goo.gl/gnKFA1iYfTjnkF63A>

Location 5-2, (Road 174) Turn right to road 8



Actions:

- Ref. to Location 5-1; 5-2; 5-3

Google maps coordinates: 59.340181, 24.104351 <https://maps.app.goo.gl/gnKFA1iYfTjnkF63A>

Route surveys	Route EE Paldiski – EE Tootsi	Author Fulmenn UAB	
Project no. / Ref.: RM_Tootsi_02B	Dated December 06, 2023	Classification Initial release	Page number 11 of 47

4 TRANSPORT SURVEY

Location 5-3, (Road 174) Turn right to road 8

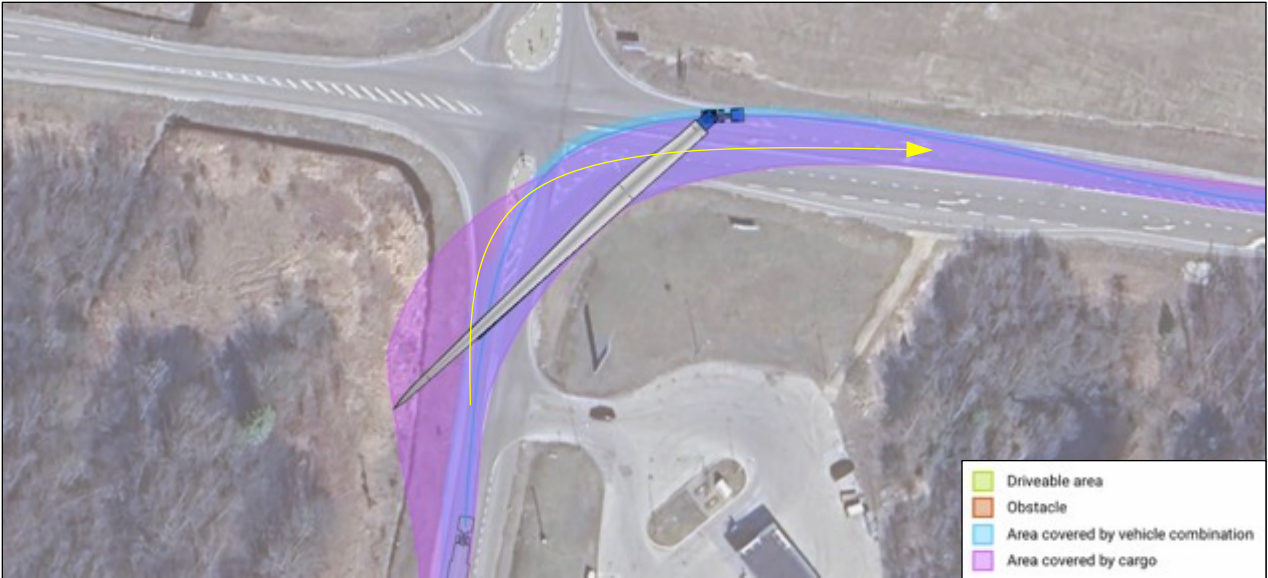


Actions:


- Ref. to Location 5-1; 5-2; 5-3

Google maps coordinates: 59.340181, 24.104351 <https://maps.app.goo.gl/gnKFA1iYfTjnkF63A>

Ref. to Location 5-1; 5-2; 5-3. Swept path No. 2

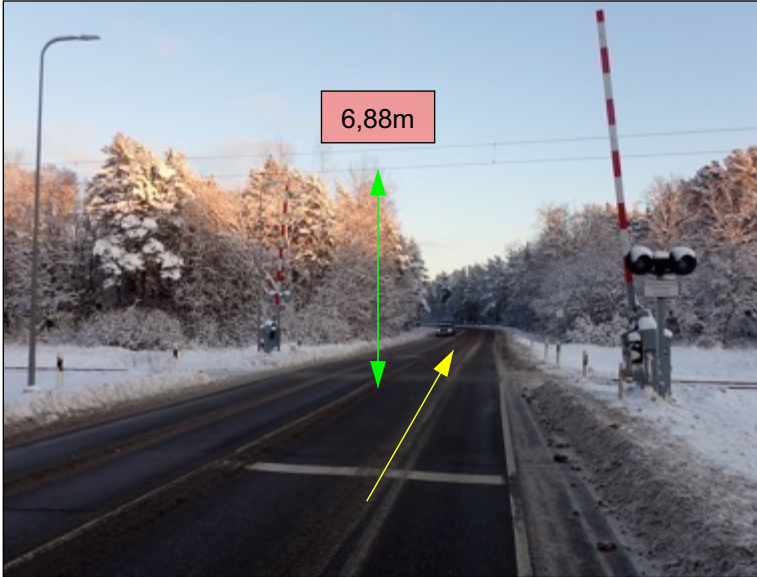


Google maps coordinates: 59.340181, 24.104351 <https://maps.app.goo.gl/gnKFA1iYfTjnkF63A>

Route surveys	Route EE Paldiski – EE Tootsi	Author Fulmenn UAB	
Project no. / Ref.: RM_Tootsi_02B	Dated December 06, 2023	Classification Initial release	Page number 12 of 47

4 TRANSPORT SURVEY

Location 6-1, (Road 8) Electrified railroad crossing

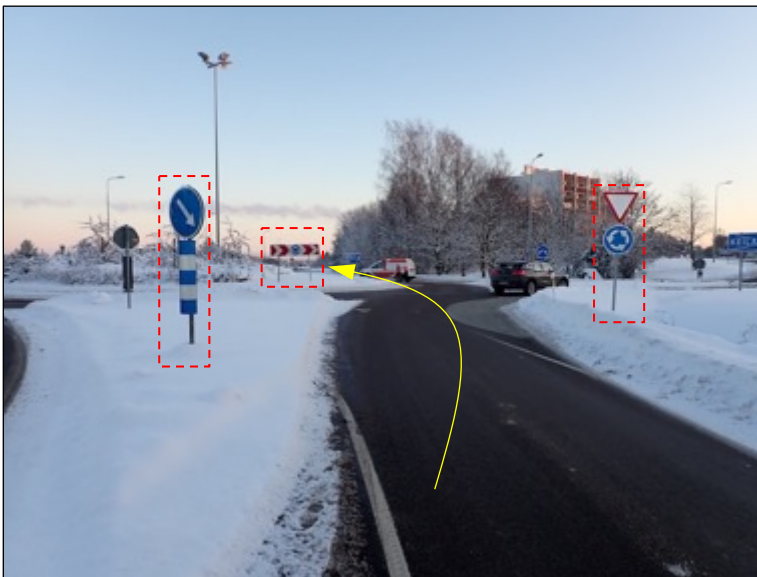


Actions:

- Height of the electric line 6.88m
- No Action

Google maps coordinates: 59.336386, 24.243267 <https://maps.app.goo.gl/ptqoqVV4xgaUtV2m8>

Location 7-1, (Road 8) Roundabout 8/194. Second exit to road 8



Actions:

- Ref. to Locations 7-1; 7-2
- 6 road signs are removable

Google maps coordinates: 59.317347, 24.410674 <https://maps.app.goo.gl/kMxg9kKhQwHgNAni9>

Route surveys	Route EE Paldiski – EE Tootsi	Author Fulmenn UAB	
Project no. / Ref.: RM_Tootsi_02B	Dated December 06, 2023	Classification Initial release	Page number 13 of 47

4 TRANSPORT SURVEY

Location 7-2, (Road 8) Roundabout 8/194. Second exit to road 8



Actions:


- Ref. to Locations 7-1; 7-2

Google maps coordinates: 59.317347, 24.410674 <https://maps.app.goo.gl/kMxg9kKhQwHgNAni9>

Ref. to Locations 7-1; 7-2. Swept path No. 3



Google maps coordinates: 59.317347, 24.410674 <https://maps.app.goo.gl/kMxg9kKhQwHgNAni9>

Route surveys	Route EE Paldiski – EE Tootsi	Author Fulmenn UAB	
Project no. / Ref.: RM_Tootsi_02B	Dated December 06, 2023	Classification Initial release	Page number 14 of 47

4 TRANSPORT SURVEY

Location 8-1, (Road 8) Roundabout 8/Piiri. Second exit to road 8



Actions:

- Ref. to Location 8-1; 8-2; 8-3
- 3 road signs are removable
- 2 road sign needs to be made removable

Google maps coordinates: 59.314437, 24.422491 <https://maps.app.goo.gl/Cd9sgZnhZz93TRBZA>

Location 8-2, (Road 8) Roundabout 8/Piiri. Second exit to road 8



Actions:

- Ref. to Location 8-1; 8-2; 8-3

Google maps coordinates: 59.314437, 24.422491 <https://maps.app.goo.gl/Cd9sgZnhZz93TRBZA>

Route surveys	Route EE Paldiski – EE Tootsi	Author Fulmenn UAB	
Project no. / Ref.: RM_Tootsi_02B	Dated December 06, 2023	Classification Initial release	Page number 15 of 47

4 TRANSPORT SURVEY

Location 8-3, (Road 8) Roundabout 8/Piiri. Second exit to road 8



Actions:


- Ref. to Location 8-1; 8-2; 8-3

Google maps coordinates: 59.314437, 24.422491 <https://maps.app.goo.gl/Cd9sgZnhZz93TRBZA>

Ref. to Location 8-1; 8-2; 8-3. Swept path No. 4

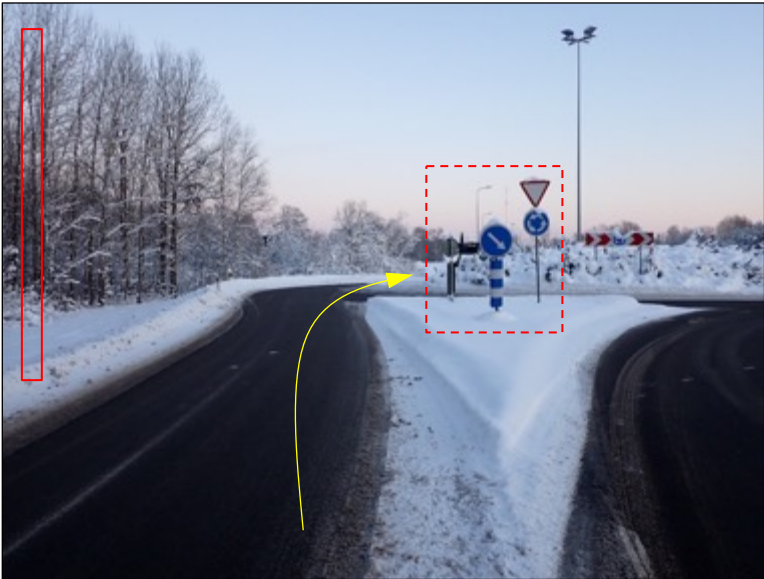


Google maps coordinates: 59.314437, 24.422491 <https://maps.app.goo.gl/Cd9sgZnhZz93TRBZA>

Route surveys	Route EE Paldiski – EE Tootsi	Author Fulmenn UAB	
Project no. / Ref.: RM_Tootsi_02B	Dated December 06, 2023	Classification Initial release	Page number 16 of 47

4 TRANSPORT SURVEY

Location 9-1, (Road 8) Roundabout 8/Põhjakaare. Second exit to road 8 (against the traffic)

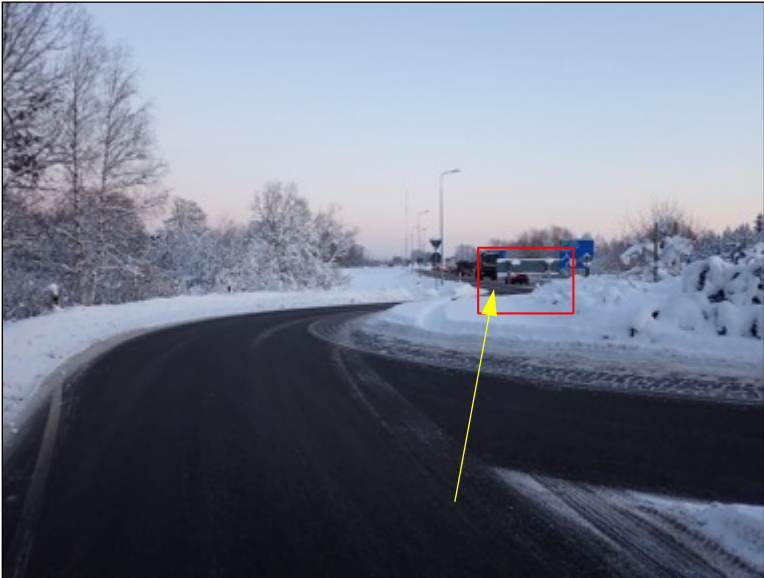


Actions:

- Ref. to Location 9-1; 9-2; 9-3
- 3 road signs are removable
- 2 road signs need to be removable
- Street furniture TEMPORARY dismantled/not shown in the picture

Google maps coordinates: 59.313088, 24.428476 <https://maps.app.goo.gl/W51RnFoYrsHZkqaT9>

Location 9-2, (Road 8) Roundabout 8/Põhjakaare. Second exit to road 8 (against the traffic)



Actions:

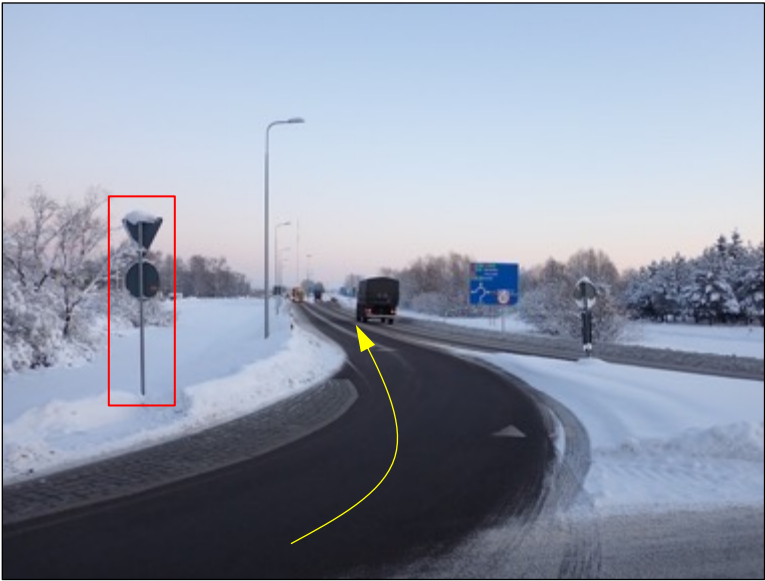
- Ref. to Location 9-1; 9-2; 9-3

Google maps coordinates: 59.313088, 24.428476 <https://maps.app.goo.gl/W51RnFoYrsHZkqaT9>

Route surveys	Route EE Paldiski – EE Tootsi	Author Fulmenn UAB	
Project no. / Ref.: RM_Tootsi_02B	Dated December 06, 2023	Classification Initial release	Page number 17 of 47

4 TRANSPORT SURVEY

Location 9-3, (Road 8) Roundabout 8/Põhjakaare. Second exit to road 8 (against the traffic)

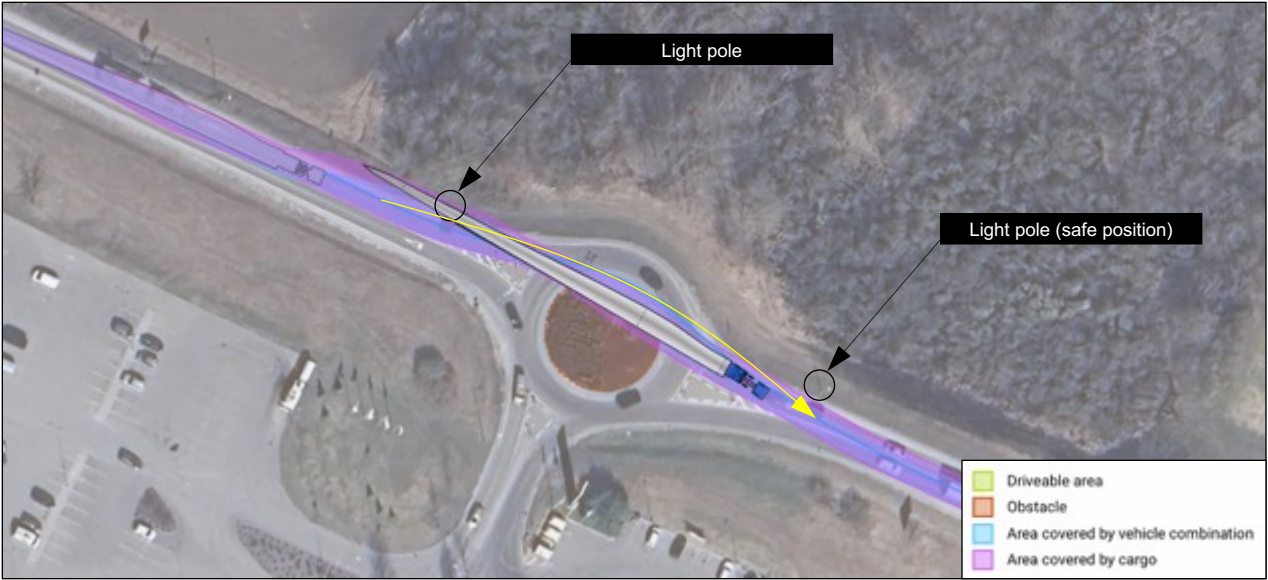


Actions:

- Ref. to Location 9-1; 9-2; 9-3

Google maps coordinates: 59.313088, 24.428476 <https://maps.app.goo.gl/W51RnFoYrsHZkqaT9>

Ref. to Location 9-1; 9-2; 9-3. Swept path No. 5

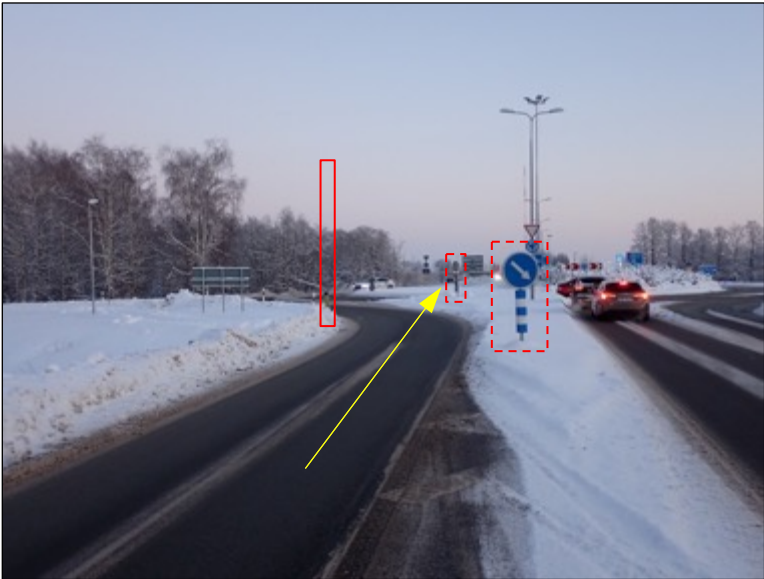


Google maps coordinates: 59.313088, 24.428476 <https://maps.app.goo.gl/W51RnFoYrsHZkqaT9>

Route surveys	Route EE Paldiski – EE Tootsi	Author Fulmenn UAB	
Project no. / Ref.: RM_Tootsi_02B	Dated December 06, 2023	Classification Initial release	Page number 18 of 47

4 TRANSPORT SURVEY

Location 10-1, (Road 8) Roundabout 8/17. Second exit to road 8 (against the traffic)

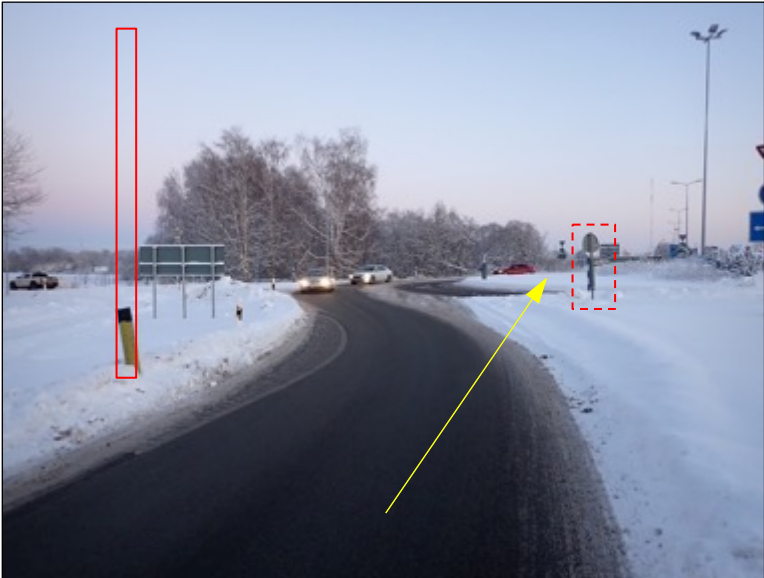


Actions:

- Ref. to Location 10-1; 10-2; 10-3; 10-4
- 4 road signs are removable
- 1 road sign needs to be removable
- 1 light pole needs to be dismantled
- Street furniture TEMPORARY dismantled/not shown in the picture

Google maps coordinates: 59.312110, 24.432896 <https://maps.app.goo.gl/2uP5PdFmYhkUbs7e9>


Location 10-2, (Road 8) Roundabout 8/17. Second exit to road 8 (against the traffic)



Actions:

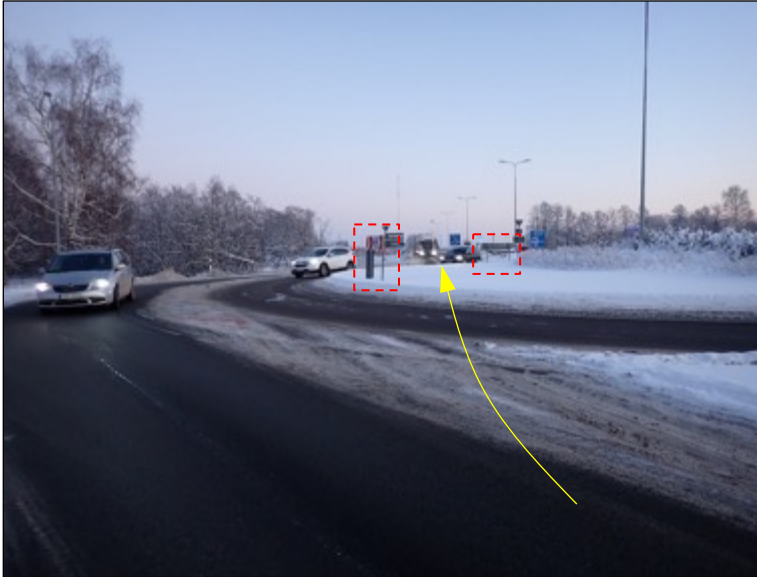
- Ref. to Location 10-1; 10-2; 10-3; 10-4

Google maps coordinates: 59.312110, 24.432896 <https://maps.app.goo.gl/2uP5PdFmYhkUbs7e9>

Route surveys	Route EE Paldiski – EE Tootsi	Author Fulmenn UAB	
Project no. / Ref.: RM_Tootsi_02B	Dated December 06, 2023	Classification Initial release	Page number 19 of 47

4 TRANSPORT SURVEY

Location 10-3, (Road 8) Roundabout 8/17. Second exit to road 8 (against the traffic)



Actions:

- Ref. to Location 10-1; 10-2; 10-3; 10-4

Google maps coordinates: 59.312110, 24.432896 <https://maps.app.goo.gl/2uP5PdFmYhkUbs7e9>


Location 10-4, (Road 8) Roundabout 8/17. Second exit to road 8 (against the traffic)



Actions:

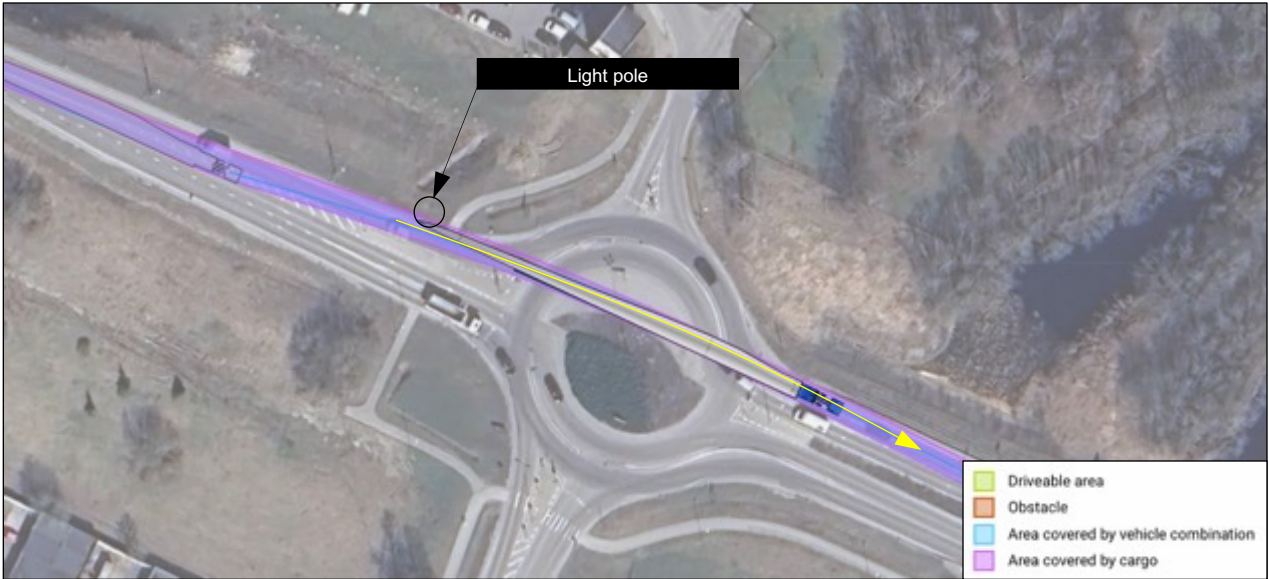
- Ref. to Location 10-1; 10-2; 10-3; 10-4

Google maps coordinates: 59.312110, 24.432896 <https://maps.app.goo.gl/2uP5PdFmYhkUbs7e9>

Route surveys	Route EE Paldiski – EE Tootsi	Author Fulmenn UAB	
Project no. / Ref.: RM_Tootsi_02B	Dated December 06, 2023	Classification Initial release	Page number 20 of 47

4 TRANSPORT SURVEY

Ref. to Location 10-1; 10-2; 10-3; 10-4. Swept path No. 6



Google maps coordinates: 59.312110, 24.432896 <https://maps.app.goo.gl/2uP5PdFmYhkUbs7e9>


Location 11-1, (Road 8) Roundabout 8/11. Second exit to road 11 (against the traffic)



Actions:

- Ref. to Locations 11-1; 11-2; 11-3
- 2 road signs are removable
- 1 road sign needs to be made removable
- Roundabout is prepared for abnormal transport

Google maps coordinates: 59.311188, 24.436605 <https://maps.app.goo.gl/sBC6QP2SSWTHkKBz6>

Route surveys	Route EE Paldiski – EE Tootsi	Author Fulmenn UAB	
Project no. / Ref.: RM_Tootsi_02B	Dated December 06, 2023	Classification Initial release	Page number 21 of 47

4 TRANSPORT SURVEY

Location 11-2, (Road 8) Roundabout 8/11. Second exit to road 11 (against the traffic)



Actions:

- Ref. to Locations 11-1; 11-2; 11-3

Google maps coordinates: 59.311188, 24.436605 <https://maps.app.goo.gl/sBC6QP2SSWTHkKBz6>


Location 11-3, (Road 8) Roundabout 8/11. Second exit to road 11 (against the traffic)



Actions:

- Ref. to Locations 11-1; 11-2; 11-3

Google maps coordinates: 59.311188, 24.436605 <https://maps.app.goo.gl/sBC6QP2SSWTHkKBz6>

Route surveys	Route EE Paldiski – EE Tootsi	Author Fulmenn UAB	
Project no. / Ref.: RM_Tootsi_02B	Dated December 06, 2023	Classification Initial release	Page number 22 of 47

4 TRANSPORT SURVEY

Ref. to Locations 11-1; 11-2; 11-3. Swept path No. 7



Google maps coordinates: 59.311188, 24.436605 <https://maps.app.goo.gl/sBC6QP2SSWTHkKBz6>


Location 12-1, (Road 11) Exit ongoing traffic lane



Actions:

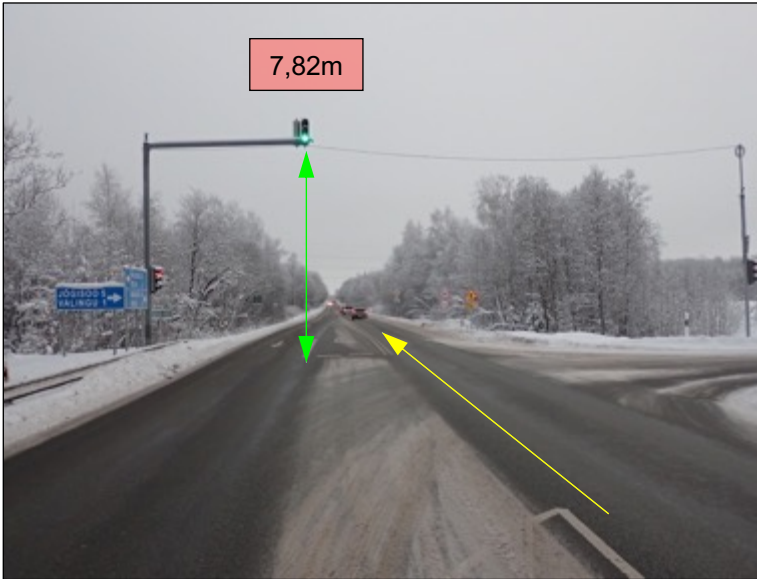
- No Action

Google maps coordinates: 59.310470, 24.440755 <https://maps.app.goo.gl/1NdEnAGTNmqp2Xhh9>

Route surveys	Route EE Paldiski – EE Tootsi	Author Fulmenn UAB	
Project no. / Ref.: RM_Tootsi_02B	Dated December 06, 2023	Classification Initial release	Page number 23 of 47

4 TRANSPORT SURVEY

Location 13-1, (Road 11) Traffic light



Actions:

- Height of the traffic light 7,82m
- No Action

Google maps coordinates: 59.313553, 24.471949 <https://maps.app.goo.gl/CGhQ4DnTo4xsVjNi9>

Location 14-1, (Road 11) Slight left on the main road



Actions:

- 2 road signs need to be made removable

Google maps coordinates: 59.317052, 24.503612 <https://maps.app.goo.gl/N9uHYJUDYHRNUzGW6>

Route surveys	Route EE Paldiski – EE Tootsi	Author Fulmenn UAB	
Project no. / Ref.: RM_Tootsi_02B	Dated December 06, 2023	Classification Initial release	Page number 24 of 47

4 TRANSPORT SURVEY

Location 15-1, (Road 11) Steel frame



Actions:

- Height of the frame 8,21m
- No Action

Google maps coordinates: 59.316621, 24.516977 <https://maps.app.goo.gl/rUCdBUN9ntuHmMZN7>


Location 16-1, (Road 11) Steel frame



Actions:

- Height of the frame 8,17m
- No Action

Google maps coordinates: 59.311119, 24.554053 <https://maps.app.goo.gl/VDaHw5CGi9af6t5Y9>

Route surveys	Route EE Paldiski – EE Tootsi	Author Fulmenn UAB	
Project no. / Ref.: RM_Tootsi_02B	Dated December 06, 2023	Classification Initial release	Page number 25 of 47

4 TRANSPORT SURVEY

Location 17-1, (Road 11) Steel frame



Actions:

- Height of the frame 7,83m
- No Action

Google maps coordinates: 59.312113, 24.561330 <https://maps.app.goo.gl/5YT4FWyPpxNE6EqU9>

Location 18-1, (Road 11) Steel frame



Actions:

- Height of the frame 7,22m
- No Action

Google maps coordinates: 59.312848, 24.565399 <https://maps.app.goo.gl/3AvWN7NDcPp7MVvE9>

Route surveys	Route EE Paldiski – EE Tootsi	Author Fulmenn UAB	
Project no. / Ref.: RM_Tootsi_02B	Dated December 06, 2023	Classification Initial release	Page number 26 of 47

4 TRANSPORT SURVEY

Location 19-1, (Road 11) Exit right to road 4



Actions:

- Ref. to Location 19-1; 19-2; 19-3; 19-4; 19-5
- 3 road sign needs to be made removable
- 7 light poles need to be dismantled

Google maps coordinates: 59.312830, 24.570678 <https://maps.app.goo.gl/iZBeYCSfGVDcSgCr9>

Location 19-2, (Road 11) Exit right to road 4



Actions:

- Ref. to Location 19-1; 19-2; 19-3; 19-4; 19-5

Google maps coordinates: 59.312830, 24.570678 <https://maps.app.goo.gl/iZBeYCSfGVDcSgCr9>

Route surveys	Route EE Paldiski – EE Tootsi	Author Fulmenn UAB	
Project no. / Ref.: RM_Tootsi_02B	Dated December 06, 2023	Classification Initial release	Page number 27 of 47

4 TRANSPORT SURVEY

Location 19-3, (Road 11) Exit right to road 4



Actions:

- Ref. to Location 19-1; 19-2; 19-3; 19-4; 19-5

Google maps coordinates: 59.312830, 24.570678 <https://maps.app.goo.gl/iZBeYCSfGVDcSgCr9>

Location 19-4, (Road 11) Exit right to road 4



Actions:

- Ref. to Location 19-1; 19-2; 19-3; 19-4; 19-5

Google maps coordinates: 59.312830, 24.570678 <https://maps.app.goo.gl/iZBeYCSfGVDcSgCr9>

Route surveys	Route EE Paldiski – EE Tootsi	Author Fulmenn UAB	
Project no. / Ref.: RM_Tootsi_02B	Dated December 06, 2023	Classification Initial release	Page number 28 of 47

4 TRANSPORT SURVEY

Location 19-5, (Road 11) Exit right to road 4

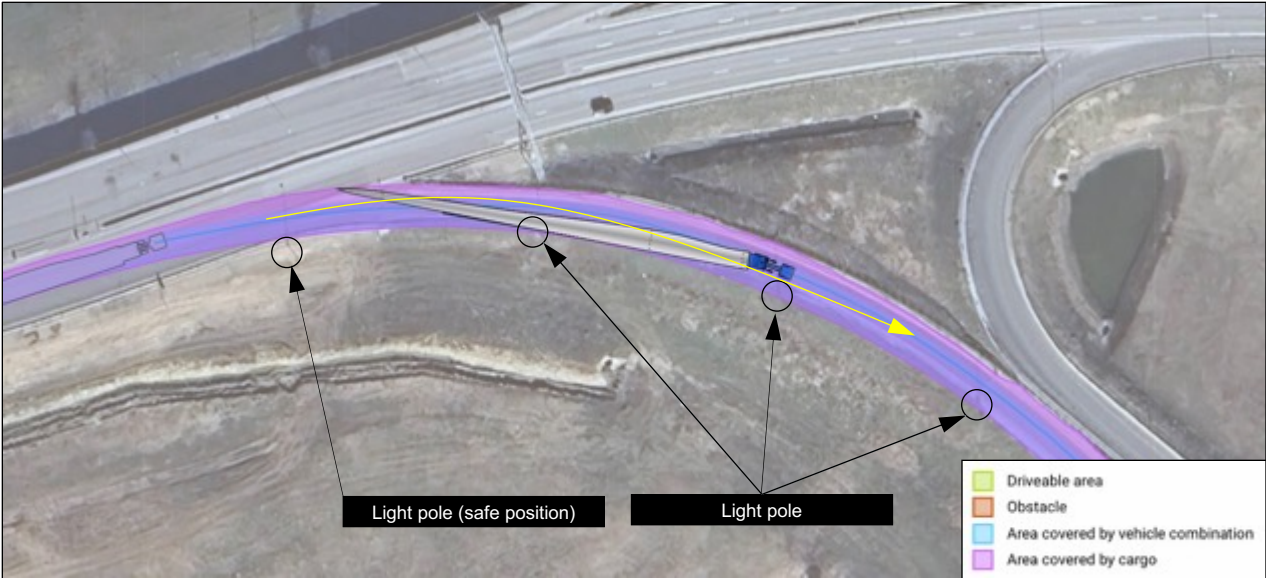


Actions:


- Ref. to Location 19-1; 19-2; 19-3; 19-4; 19-5

Google maps coordinates: 59.312830, 24.570678 <https://maps.app.goo.gl/iZBeYCSfGVDcSgCr9>

Ref. to Location 19-1; 19-2; 19-3; 19-4; 19-5. Swept path No. 8



Google maps coordinates: 59.312830, 24.570678 <https://maps.app.goo.gl/iZBeYCSfGVDcSgCr9>

Route surveys	Route EE Paldiski – EE Tootsi	Author Fulmenn UAB	
Project no. / Ref.: RM_Tootsi_02B	Dated December 06, 2023	Classification Initial release	Page number 29 of 47

4 TRANSPORT SURVEY

Location 20-1, (Road 4) Steel frame



Actions:

- Height of the frame 7,74m
- No Action

Google maps coordinates: 59.253024, 24.501217 <https://maps.app.goo.gl/hVv5dausFKdBu5c56>


Location 21-1, (Road 4) Steel frame



Actions:

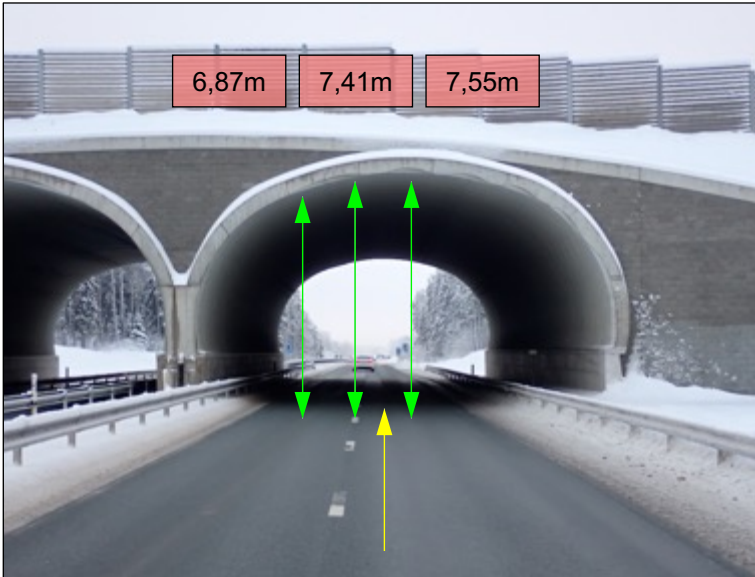
- Height of the frame 7,77m
- No Action

Google maps coordinates: 59.250199, 24.498161 <https://maps.app.goo.gl/Br3Sv96kCSP1CXRNA>

Route surveys	Route EE Paldiski – EE Tootsi	Author Fulmenn UAB	
Project no. / Ref.: RM_Tootsi_02B	Dated December 06, 2023	Classification Initial release	Page number 30 of 47

4 TRANSPORT SURVEY

Location 22-1, (Road 4) Bridge

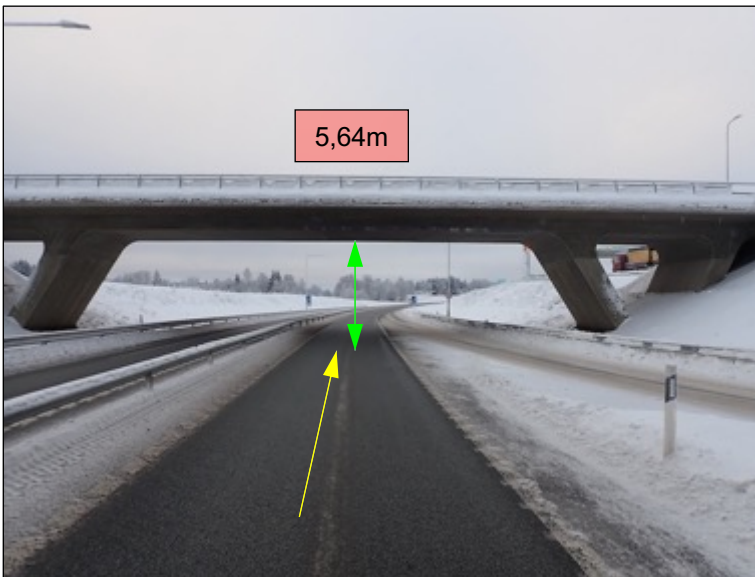


Actions:

- Height of the bridge 6,87m/7,41m/7,55m
- No Action

Google maps coordinates: 59.175757, 24.502091 <https://maps.app.goo.gl/gwsqLwFFrbjgCRip6>


Location 23-1, (Road 4) Bridge



Actions:

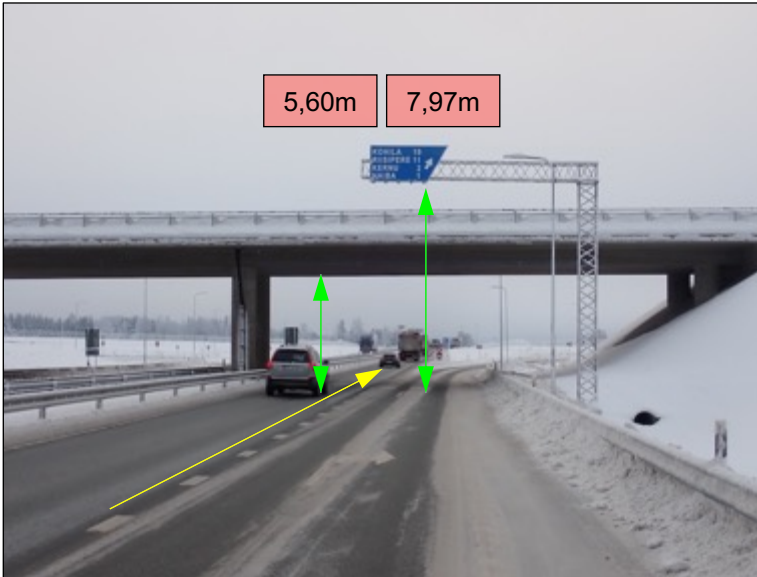
- Height of the bridge 5,64m
- No Action

Google maps coordinates: 59.154506, 24.504958 <https://maps.app.goo.gl/oakcg4gSergGndqC9>

Route surveys	Route EE Paldiski – EE Tootsi	Author Fulmenn UAB	
Project no. / Ref.: RM_Tootsi_02B	Dated December 06, 2023	Classification Initial release	Page number 31 of 47

4 TRANSPORT SURVEY

Location 24-1, (Road 4) Bridge. Steel frame

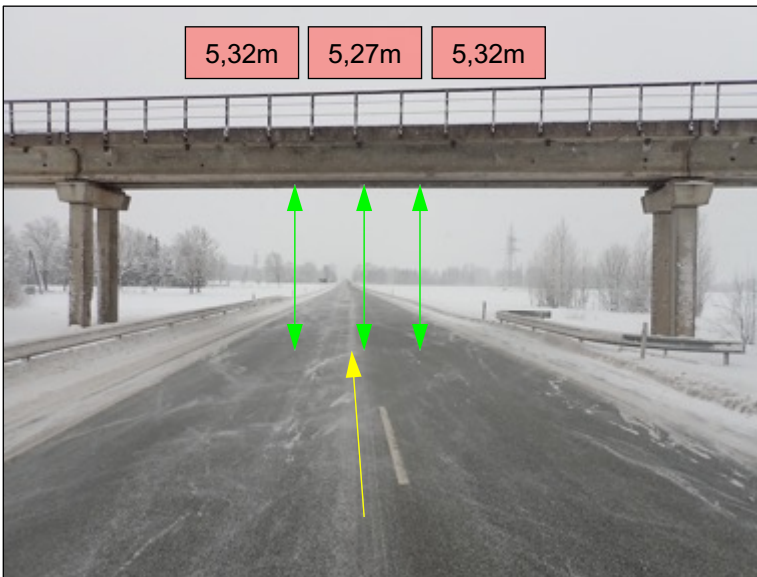


Actions:

- Height of the bridge 5,60m
- Height of the frame 7,97m
- No Action

Google maps coordinates: 59.128045, 24.479044 <https://maps.app.goo.gl/EcDyUTxs1PYxkBDu5>


Location 25-1, (Road 4) Bridge



Actions:

- Height of the bridge 5,32m/5,27m/5,32m
- No Action

Google maps coordinates: 58.583415, 24.512213 <https://maps.app.goo.gl/9gE3ocuUvbk7dpaf7>

Route surveys	Route EE Paldiski – EE Tootsi	Author Fulmenn UAB	
Project no. / Ref.: RM_Tootsi_02B	Dated December 06, 2023	Classification Initial release	Page number 32 of 47

4 TRANSPORT SURVEY

Location 26-1, (Road 4) Turn left to Niidu tee. Start of the gravel road



Actions:

- Ref. to Location 26-1; 26-2
- 2 road signs need to be made removable

Google maps coordinates: 58.533910, 24.550806 <https://maps.app.goo.gl/xcu5KU8mzFCnDwu5>

Location 26-2, (Road 4) Turn left to Niidu tee. Start of the gravel road



Actions:

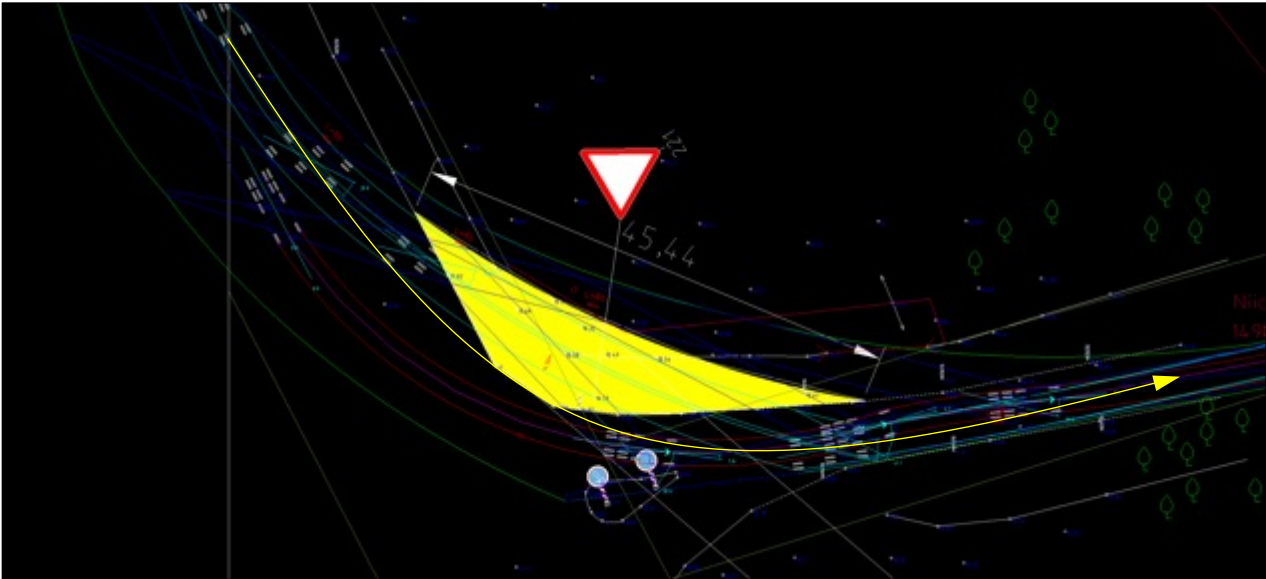
- Ref. to Location 26-1; 26-2

Google maps coordinates: 58.533910, 24.550806 <https://maps.app.goo.gl/xcu5KU8mzFCnDwu5>

Route surveys	Route EE Paldiski – EE Tootsi	Author Fulmenn UAB	
Project no. / Ref.: RM_Tootsi_02B	Dated December 06, 2023	Classification Initial release	Page number 33 of 47

4 TRANSPORT SURVEY

Ref. to Location 26-1; 26-2. Swept path No. 9



Google maps coordinates: 58.533910, 24.550806 <https://maps.app.goo.gl/xcua5KU8mzFCnDwu5>

Location 27-1, (Niidu tee) Turn right to unnamed road



Actions:

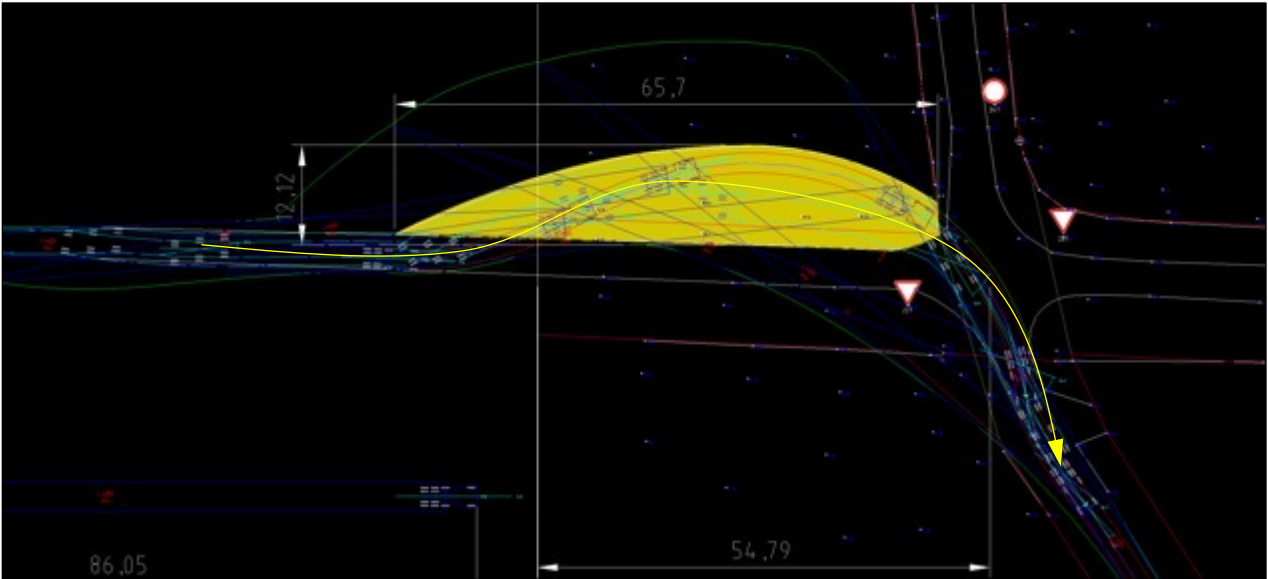
- 1 road sign needs to be made removable
- Temporary road works are needed in the area marked in blue. Ca. 560,00m2

Google maps coordinates: 58.533690, 24.575435 <https://maps.app.goo.gl/4BMihyY4qkvYxYc96>

Route surveys	Route EE Paldiski – EE Tootsi	Author Fulmenn UAB	
Project no. / Ref.: RM_Tootsi_02B	Dated December 06, 2023	Classification Initial release	Page number 34 of 47

4 TRANSPORT SURVEY

Ref. to Location 27-1. Swept path No. 10



Google maps coordinates: 58.533690, 24.575435 <https://maps.app.goo.gl/4BMihyY4qkvYc96>

Location 28-1, (Unnnamed road) Turn left to road 203. End of the gravel road



Actions:

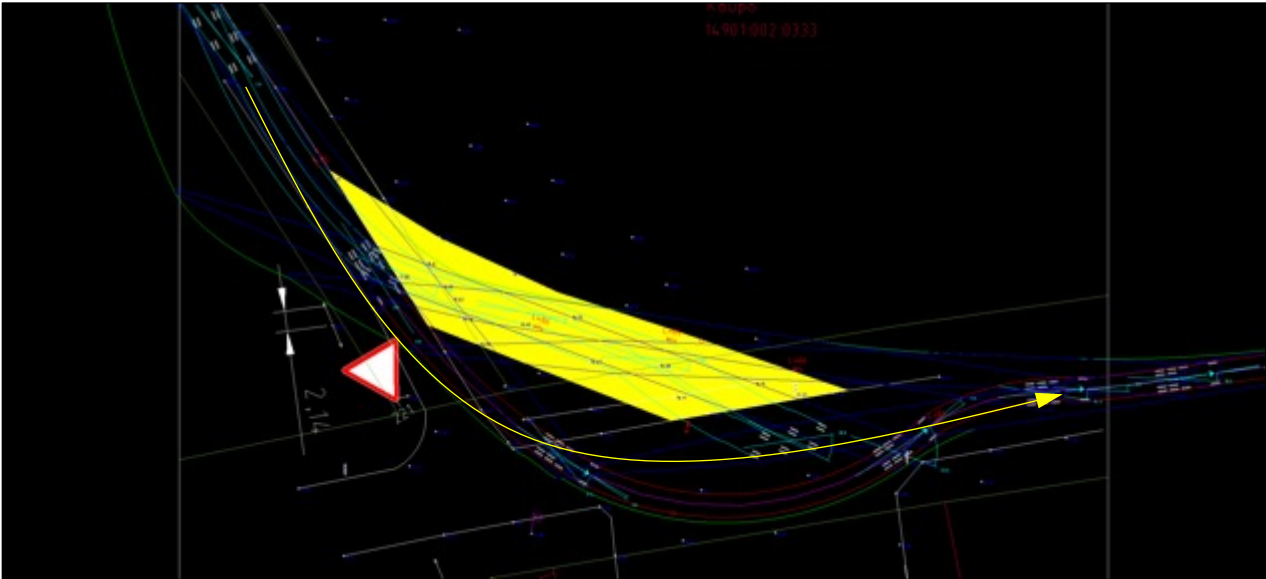
- 1 road sign needs to be made removable
- Temporary road works are needed in the area marked in blue. Ca. 385,00m2

Google maps coordinates: 58.529007, 24.580999 <https://maps.app.goo.gl/TvHoqxmFpA42fG9BA>

Route surveys	Route EE Paldiski – EE Tootsi	Author Fulmenn UAB	
Project no. / Ref.: RM_Tootsi_02B	Dated December 06, 2023	Classification Initial release	Page number 35 of 47

4 TRANSPORT SURVEY

Ref. to Locations 28-1. Swept path No. 11



Google maps coordinates: 58.529025, 24.581467 <https://maps.app.goo.gl/Sz1i8tkRiP51YcDH7>


Location 29-1, (Road 203) Branches



Actions:

- Ref. to Locations 29-1; 29-2
- The height of the branches above the ground is approximately 4,00m, and a minimum ground clearance of 5,00m needs to be provided
- Branches to be trimmed to ensure safe ground and side clearance

Google maps coordinates: 58.529244, 24.584238 <https://maps.app.goo.gl/yywpocTRCBqW4bXU6>

Route surveys	Route EE Paldiski – EE Tootsi	Author Fulmenn UAB	
Project no. / Ref.: RM_Tootsi_02B	Dated December 06, 2023	Classification Initial release	Page number 36 of 47

4 TRANSPORT SURVEY

Location 29-2, (Road 203) Branches



Actions:

- Ref. to Locations 29-1; 29-2

Google maps coordinates: 58.529244, 24.584238 <https://maps.app.goo.gl/ywpcTRCBqW4bXU6>


Location 30-1, (Road 203) Branches



Actions:

- The height of the branches above the ground is approximately 4,00m, and a minimum ground clearance of 5,00m needs to be provided
- Branches to be trimmed to ensure safe ground and side clearance

Google maps coordinates: 58.528621, 24.587250 <https://maps.app.goo.gl/TAcnQXm7SMsfhpyk7>

Route surveys	Route EE Paldiski – EE Tootsi	Author Fulmenn UAB	
Project no. / Ref.: RM_Tootsi_02B	Dated December 06, 2023	Classification Initial release	Page number 37 of 47

4 TRANSPORT SURVEY

Location 31-1, (Road 203) Branches



Actions:

- The height of the branches above the ground is approximately 4,00m, and a minimum ground clearance of 5,00m needs to be provided
- Branches to be trimmed to ensure safe ground and side clearance

Google maps coordinates: 58.525893, 24.599949 <https://maps.app.goo.gl/qMUVSgeuyJvufSEY7>


Location 32-1, (Road 203) Branches



Actions:

- The height of the branches above the ground is approximately 4,00m, and a minimum ground clearance of 5,00m needs to be provided
- Branches to be trimmed to ensure safe ground and side clearance

Google maps coordinates: 58.526335, 24.606558 <https://maps.app.goo.gl/QfoJbof3UtHVVPRZA>

Route surveys	Route EE Paldiski – EE Tootsi	Author Fulmenn UAB	
Project no. / Ref.: RM_Tootsi_02B	Dated December 06, 2023	Classification Initial release	Page number 38 of 47

4 TRANSPORT SURVEY

Location 33-1, (Road 203) Branches

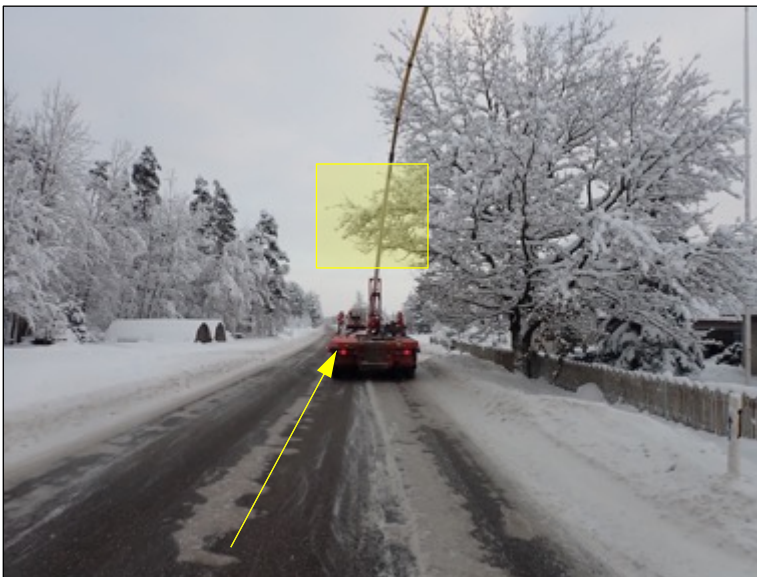


Actions:

- The height of the branches above the ground is approximately 4,00m, and a minimum ground clearance of 5,00m needs to be provided
- Branches to be trimmed to ensure safe ground and side clearance

Google maps coordinates: 58.523594, 24.628665 <https://maps.app.goo.gl/bx2rT65Uz49RFT4v7>


Location 34-1, (Road 203) Branches



Actions:

- The height of the branches above the ground is approximately 4,00m, and a minimum ground clearance of 5,00m needs to be provided
- Branches to be trimmed to ensure safe ground and side clearance

Google maps coordinates: 58.523448, 24.648007 <https://maps.app.goo.gl/2tjoMYDQXr6Gh83z5>

Route surveys	Route EE Paldiski – EE Tootsi	Author Fulmenn UAB	
Project no. / Ref.: RM_Tootsi_02B	Dated December 06, 2023	Classification Initial release	Page number 39 of 47

4 TRANSPORT SURVEY

Location 35-1, (Road 203) Branches



Actions:

- The height of the branches above the ground is approximately 4,00m, and a minimum ground clearance of 5,00m needs to be provided
- Branches to be trimmed to ensure safe ground and side clearance

Google maps coordinates: 58.526564, 24.700014 <https://maps.app.goo.gl/FHM2XDcfkPmDjdUz6>


Location 36-1, (Road 203) Turn left to road 270



Actions:

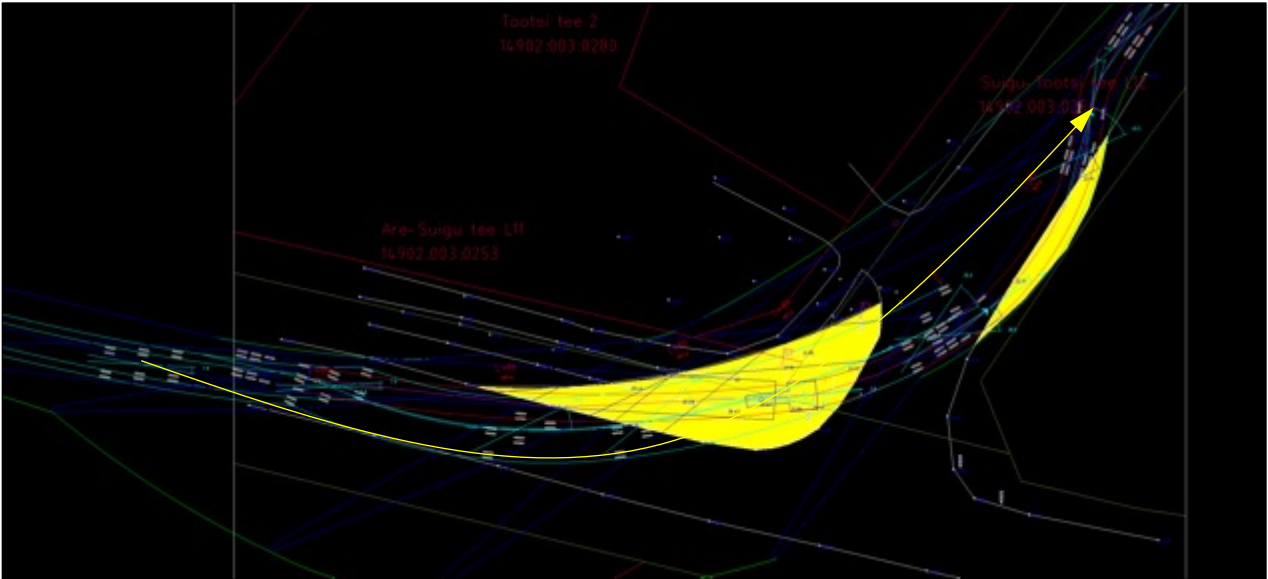
- No Action

Google maps coordinates: 58.526326, 24.701990 <https://maps.app.goo.gl/gAvGtMWNsTadHNGe9>

Route surveys	Route EE Paldiski – EE Tootsi	Author Fulmenn UAB	
Project no. / Ref.: RM_Tootsi_02B	Dated December 06, 2023	Classification Initial release	Page number 40 of 47

4 TRANSPORT SURVEY

Ref. to Locations 36-1. Swept path No. 12



Google maps coordinates: 58.526326, 24.701990 <https://maps.app.goo.gl/gAvGtMWNsTadHNGe9>


Location 37-1, (Road 270) Branches



Actions:

- The height of the branches above the ground is approximately 4,00m, and a minimum ground clearance of 5,00m needs to be provided
- Branches to be trimmed to ensure safe ground and side clearance

Google maps coordinates: 58.527558, 24.703728 <https://maps.app.goo.gl/RC7YvGf5JGkAQpqr9>

Route surveys	Route EE Paldiski – EE Tootsi	Author Fulmenn UAB	
Project no. / Ref.: RM_Tootsi_02B	Dated December 06, 2023	Classification Initial release	Page number 41 of 47

4 TRANSPORT SURVEY

Location 38-1, (Road 270) Branches

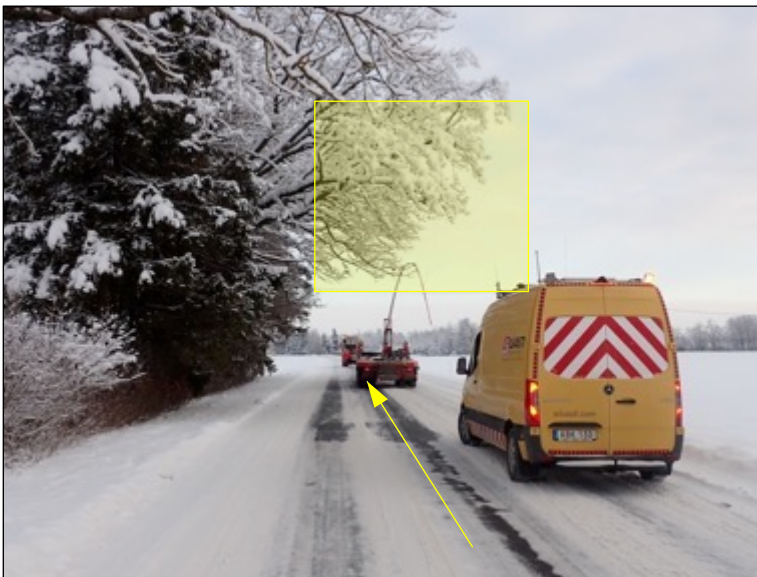


Actions:

- The height of the branches above the ground is approximately 4,00m, and a minimum ground clearance of 5,00m needs to be provided
- Branches to be trimmed to ensure safe ground and side clearance

Google maps coordinates: 58.529347, 24.706870 <https://maps.app.goo.gl/gNaXaUjaVrJre3td8>

Location 39-1, (Road 270) Branches



Actions:

- The height of the branches above the ground is approximately 4,00m, and a minimum ground clearance of 5,00m needs to be provided
- Branches to be trimmed to ensure safe ground and side clearance

Google maps coordinates: 58.533206, 24.717057 <https://maps.app.goo.gl/zNiG2dkVmTqzVNXXK7>

Route surveys	Route EE Paldiski – EE Tootsi	Author Fulmenn UAB	
Project no. / Ref.: RM_Tootsi_02B	Dated December 06, 2023	Classification Initial release	Page number 42 of 47

4 TRANSPORT SURVEY

Location 40-1, (Road 270) Branches



Actions:

- Ref. to Locations 40-1; 40-2
- The height of the branches above the ground is approximately 4,00m, and a minimum ground clearance of 5,00m needs to be provided
- Branches to be trimmed to ensure safe ground and side clearance

Google maps coordinates: 58.565741, 24.809081 <https://maps.app.goo.gl/9i68qt8q97UUUoe4A>


Location 40-2, (Road 270) Branches



Actions:

- Ref. to Locations 40-1; 40-2

Google maps coordinates: 58.565741, 24.809081 <https://maps.app.goo.gl/9i68qt8q97UUUoe4A>

Route surveys	Route EE Paldiski – EE Tootsi	Author Fulmenn UAB	
Project no. / Ref.: RM_Tootsi_02B	Dated December 06, 2023	Classification Initial release	Page number 43 of 47

4 TRANSPORT SURVEY

Location 41-1, (Road 270) Branches



Actions:

- The height of the branches above the ground is approximately 4,00m, and a minimum ground clearance of 5,00m needs to be provided
- Branches to be trimmed to ensure safe ground and side clearance

Google maps coordinates: 58.566416, 24.809816 <https://maps.app.goo.gl/LzccB2sRtAXNRdhY8>


Location 42-1, (Road 270) Continue straight to road 271



Actions:

- 1 road sign needs to be made removable

Google maps coordinates: 58.567526, 24.809871 <https://maps.app.goo.gl/bzQV6D4drA8ZGAtM8>

Route surveys	Route EE Paldiski – EE Tootsi	Author Fulmenn UAB	
Project no. / Ref.: RM_Tootsi_02B	Dated December 06, 2023	Classification Initial release	Page number 44 of 47

4 TRANSPORT SURVEY

Location 43-1, (Road 271) Branches



Actions:

- The height of the branches above the ground is approximately 4,00m, and a minimum ground clearance of 5,00m needs to be provided
- Branches to be trimmed to ensure safe ground and side clearance

Google maps coordinates: 58.576833, 24.800124 <https://maps.app.goo.gl/z7EAvn9LGDWjNa2A>


Location 44-1, (Road 271) Continue straight on the main road. Branches



Actions:

- Ref. to Location 44-1; 44-2; 44-3
- The height of the branches above the ground is approximately 4,00m, and a minimum ground clearance of 5,00m needs to be provided
- Branches to be trimmed to ensure safe ground and side clearance
- 1 road sign needs to be made removable
- Temporary road works are needed in the area marked in blue. Ca. 250,00m2

Google maps coordinates: 58.583029, 24.792297 <https://maps.app.goo.gl/XwQqn3Re83ahnjiHaA>

Route surveys	Route EE Paldiski – EE Tootsi	Author Fulmenn UAB	
Project no. / Ref.: RM_Tootsi_02B	Dated December 06, 2023	Classification Initial release	Page number 45 of 47

4 TRANSPORT SURVEY

Location 44-2, (Road 271) Continue straight on the main road. Branches

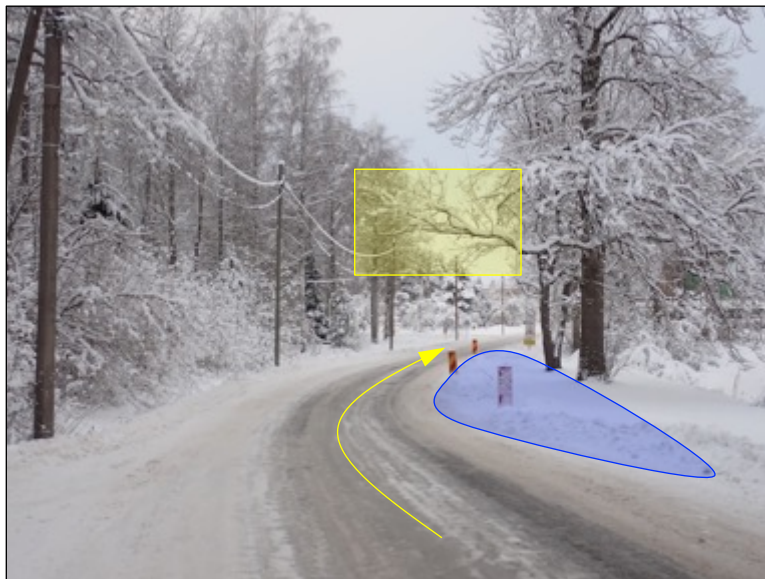


Actions:

- Ref. to Location 44-1; 44-2; 44-3

Google maps coordinates: 58.583029, 24.792297 <https://maps.app.goo.gl/XwQqn3Re83ahniHaA>


Location 44-3, (Road 271) Continue straight on the main road. Branches



Actions:

- Ref. to Location 44-1; 44-2; 44-3

Google maps coordinates: 58.583029, 24.792297 <https://maps.app.goo.gl/XwQqn3Re83ahniHaA>

Route surveys	Route EE Paldiski – EE Tootsi	Author Fulmenn UAB	
Project no. / Ref.: RM_Tootsi_02B	Dated December 06, 2023	Classification Initial release	Page number 46 of 47

4 TRANSPORT SURVEY


Location 45-1, (Road 271) End of the route. Branches



Actions:

- The height of the branches above the ground is approximately 4,00m, and a minimum ground clearance of 5,50m needs to be provided
- Branches to be trimmed to ensure safe ground and side clearance

Google maps coordinates: 58.589001, 24.784355 <https://maps.app.goo.gl/jabfqf7GmwX74gKXA>

Route surveys	Route EE Paldiski – EE Tootsi	Author Fulmenn UAB	
Project no. / Ref.: RM_Tootsi_02B	Dated December 06, 2023	Classification Initial release	Page number 47 of 47

5 NOTES

UAB Fulmenn expects that all road modifications will be implemented according to the scheduled timeframe and in full compliance with the necessary rules and regulations of Estonian laws.

It is important to ensure that all required road signs are easily removable or can be switched to temporary ones. This will help save time when it comes to taking them down and putting them back up.

On the link from Google Maps we see that some company in Estonia has already done similar work for another project: <https://maps.app.goo.gl/GxysZUWaR8uNBBJ37>

